

School of Engineering and Engineering Technology
ENGINEERING TECHNOLOGY, B.S.
MECHANICAL CONCENTRATION (MT)

2021-22

SUGGESTED COURSE SEQUENCE

First Semester - Fall			
16 Hours			
___	BIBL	1033	3 Biblical Literature
___	ENGL	1013	3 English Composition I
___	ENGR	1311	1 Manufacturing Processes Lab
___	ENGR	1513	3 Intro to Engineering Practice I (Fall only)
___	LETU	1101	1 Cornerstones of Life and Learning
___	MATH	1252	2 Trigonometry ⁽¹⁾
___	MATH	1303	3 Precalculus ⁽¹⁾

Second Semester - Spring			
16 Hours			
___	EETC	1021	1 DC Electricity Lab (Spring only) ⁽¹⁾
___	EETC	1022	2 DC Electricity (Spring only) ⁽¹⁾
___	ENGL	1023	3 English Composition II
___	ENGR	1523	3 Intro to Engineering Practice II (Spring only)
___	MATH	1603	3 Technical Calculus I (Spring only) ⁽¹⁾
___	PHYS	1111	1 General Physics I Lab (Spring only)
___	PHYS	1113	3 General Physics I (Spring only)

Third Semester - Fall			
17 Hours			
___	CHEM	1111	1 General Chemistry I Lab
___	CHEM	1113	3 General Chemistry I
___	EETC	1041	1 AC Electricity Lab (Fall only) ⁽¹⁾
___	EETC	1042	2 AC Electricity (Fall only) ⁽¹⁾
___	MATH	1613	3 Technical Calculus II (Fall only)
___	METC	2013	3 Statics (Fall only) ⁽¹⁾
___	PHYS	1121	1 General Physics II Lab (Fall only)
___	PHYS	1123	3 General Physics II (Fall only)

Fourth Semester - Spring			
16 Hours			
___	COSC	1303	3 Computer Science ⁽²⁾
___	ENGR	2400	0 Sophomore Design Seminar (Spring only)
___	ENGR	2704	4 Project Mgmt, Design & Entrepreneurship
___	METC	2023	3 Dynamics (Spring only) ⁽¹⁾
___	THEO	2043	3 Biblical Theology for the Christian Life
___			3 Civic Engagement Elective

Fifth Semester Fall			
17 Hours			
___	DSTC	1413	3 Technical Design Elements (Fall only)
___	ENGR	2313	3 Materials Engineering
___	METC	3321	1 Strength of Materials Lab (Fall only)
___	METC	3323	3 Strength of Materials (Fall only)
___	METC	3503	3 Thermodynamics & Heat Transfer (Fall only)
___	MJET	2021	1 Materials Joining Fund Lab (Fall only)
___	MJET	2023	3 Materials Joining Fund (Fall only)

Sixth Semester - Spring			
17 Hours			
___	COMM	1113	3 Intro to Speech Communication
___	EETC	3433	3 Instrumentation And Controls (Spring only)
___	GETC	3323	3 Modern Manufacturing Methods (Spring only)
___	METC	4412	2 Kinematics of Machines (Spring only)
___	METC	4433	3 Elements of Machine Design (Spring only)
___			3 Technical Elective

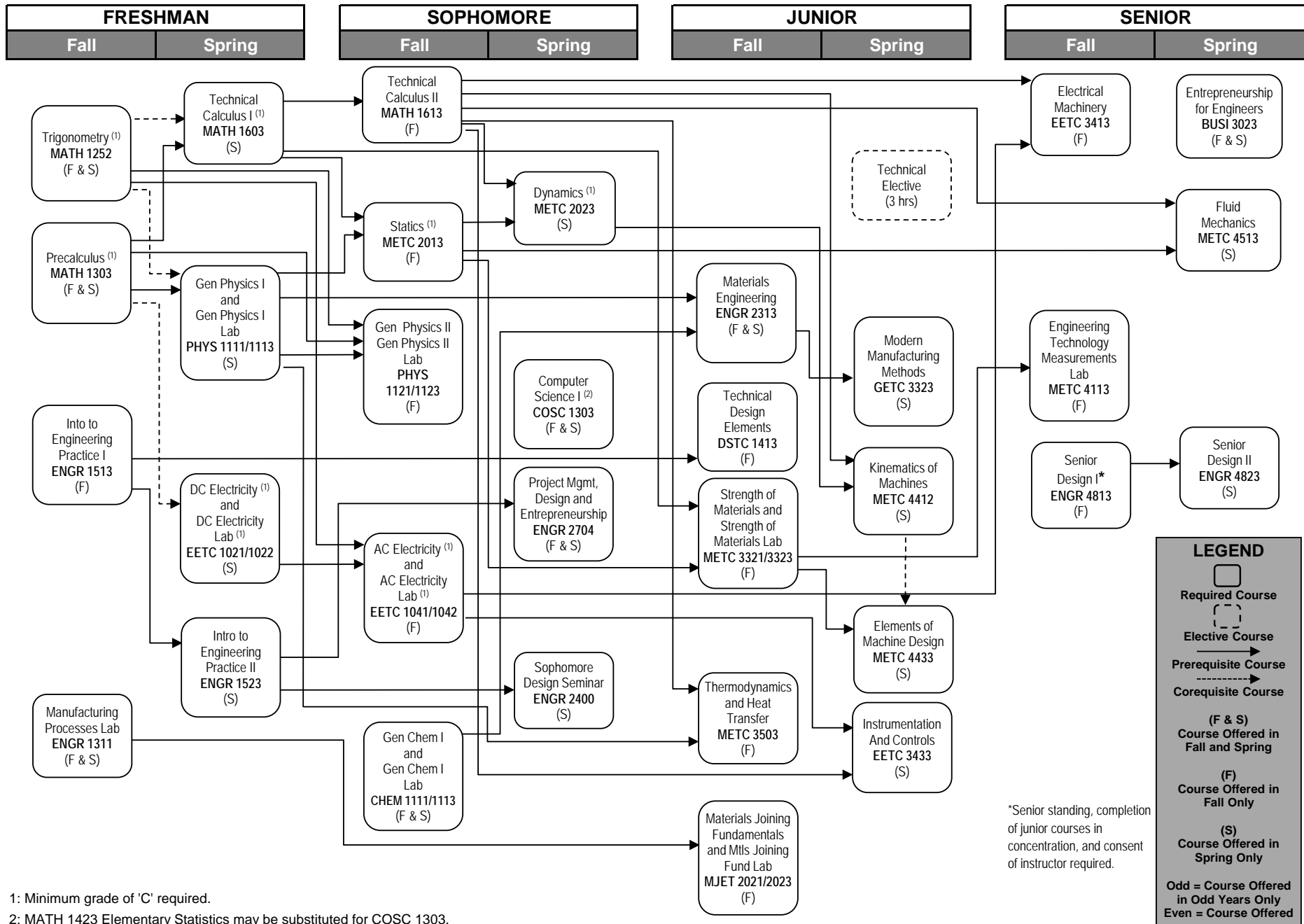
Seventh Semester - Fall			
15 Hours			
___	BIBL		3 Biblical Engagment Elective
___	EETC	3413	3 Electrical Machinery (Fall only)
___	ENGR	4813	3 Senior Design I (Fall only)
___	METC	4113	3 Engr Tech Measurements Lab (Fall only)
___			3 Civic Engagement Elective

Eighth Semester - Spring			
15 Hours			
___	BUSI	3023	3 Entrepreneurship for Engineers
___	ENGR	4823	3 Senior Design II (Spring only)
___	METC	4513	3 Fluid Mechanics (Spring only)
___	THEO		3 Theological Engagement Elective
___			3 Ingenuity Elective

TOTAL HOURS 129

1: Minimum grade of 'C' required.

2: MATH 1423 Elementary Statistics may be substituted for COSC 1303.



1: Minimum grade of 'C' required.

2: MATH 1423 Elementary Statistics may be substituted for COSC 1303.