

Bachelor of Science Mechanical Engineering (BSME)

2020-21

COURSE SEQUENCE

First Semester - Fall

17 Hours

___	BIBL	1033	3	Biblical Literature
___	CHEM	1111	1	General Chemistry I Lab
___	CHEM	1113	3	General Chemistry I
___	ENGL	1013	3	English Composition I
___	ENGR	1513	3	Intro to Engr Practice I (Fall Only)
___	LETU	1101	1	Cornerstones of Life and Learning
___	MATH	1903	3	Calculus I ⁽¹⁾

Second Semester - Spring

17

___	ENGL	1023	3	English Composition II
___	ENGR	1311	1	Manufacturing Processes Lab
___	ENGR	1523	3	Intro to Engr Practice II (Spring Only)
___	MATH	2013	3	Calculus II ⁽¹⁾
___	PHYS	2011	1	University Physics I Lab (Spring Only)
___	PHYS	2013	3	University Physics I (Spring Only)
___	THEO	2043	3	Biblical Theology for Life ⁽²⁾

Third Semester - Fall

17

___	COSC	1303	3	Computer Science I
___	ENGR	2704	4	Proj. Mgmt, Design & Entrepren
___	MATH	2023	3	Calculus III
___	MEGR	2013	3	Statics ⁽¹⁾
___	PHYS	2021	1	University Physics II Lab (Fall Only)
___	PHYS	2023	3	University Physics II (Fall Only)

Fourth Semester - Spring

17

___	COMM	1113	3	Introduction to Speech Communication
___	ENGR	2053	3	Introduction to Electric Circuits
___	ENGR	2400	0	Sophomore Design Seminar (Spring Only)
___	MATH	2203	3	Differential Equations
___	MEGR	2023	3	Dynamics ⁽¹⁾
___	MEGR	2122	2	Mechanical Engineering Lab I
___	MEGR	3323	3	Mechanics of Materials ⁽¹⁾

Fifth Semester - Fall

15

___	BIBL	___	3	Biblical Engagement Elective ⁽³⁾
___	ENGR	2313	3	Materials Engineering
___	MATH	3403	3	Statistics
___	MEGR	3513	3	Fluid Mechanics (Fall Only)
___	MEGR	3713	3	Thermodynamics

Sixth Semester - Spring

15

___	MATH	2303	3	Linear Algebra
___	MEGR	3133	3	Mechanical Engineering Lab II
___	MEGR	4723	3	Heat Transfer (Spring Only)
___	___	___	3	Civic Engagement Elective ⁽⁴⁾
___	___	___	3	Approved STEM Elective ⁽⁵⁾

Seventh Semester - Fall

15

___	ENGR	4813	3	Senior Design I ⁽⁶⁾
___	MEGR	4423	3	Mechanical Vibrations (Fall Only) ⁽⁷⁾
___	MEGR	4443	3	Machine Design (Fall Only)
___	___	___	3	Civic Engagement Elective ⁽⁴⁾
___	___	___	3	Approved STEM Elective ⁽⁵⁾

Eighth Semester - Spring

15

___	ENGR	4823	3	Senior Design II ⁽⁸⁾
___	MATH	___	3	Math Elective ⁽⁴⁾
___	THEO	___	3	Theological Engagement Elective ⁽⁹⁾
___	___	___	3	Ingenuity Elective ⁽⁴⁾
___	___	___	3	BSME Technical Elective ⁽⁴⁾

TOTAL HOURS

128

Optional Aerospace Engineering Focus within the BSME

Select 2 of the following 4 courses

MEGR 4943: Applied Aerodynamics (Fall, Grad offered)

MEGR 4953: Compressible Flow (Spring, Grad Offered)

MEGR 4993: Space Craft Design and Operations ⁽¹⁰⁾

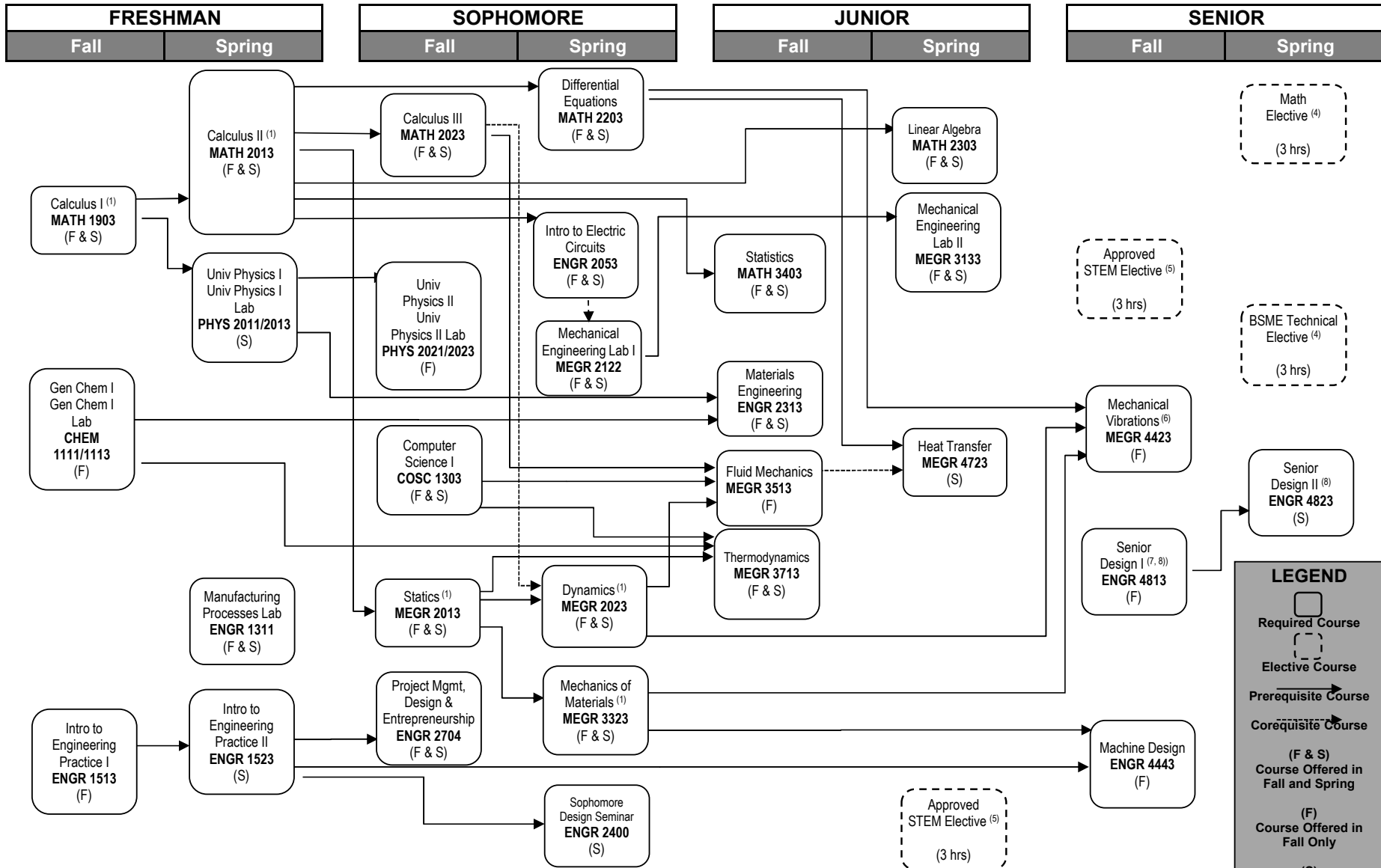
Count as STEM or BSME Technical Electives

AERO 3153: Aviation Safety Factors (online; Fall, Spring, Summer)

Counts as STEM Elective ONLY

- 1: Minimum grade of C is required.
- 2: BIBL1033 is a prerequisite
- 3: Any 2000+ BIBL course
- 4: See approved list available in Engineering Office
- 5: Approved 3000+ Engineering, Business, Science, Math course, approved 2000+ Computer Science course (3cr) (See approved electives list available in SEET Office)

- 6: Senior standing (last full year at LETU) is a pre-requisite
- 7: EEGR 3523 Mechatronics may be substituted for MEGR 4423 Mechanical Vibrations
- 8: Senior Design II must be the second half of the same project as Senior Design I (sequential semesters)
- 9: Any 2000+ level BIBL course, CCLT 3103, CCLT 3203, CCLT 4103, CMIN 3303, CMIN 3403, THEO 3003, THEO 3063, THEO 3103, THEO 3133, THEO 3203, THEO 4941-4993 Special Topics classes
- 10: Offered with sufficient demand



1: Minimum grade of C is required.

2: BIBL1033 is a prerequisite

3: Any 2000+ BIBL course

4: See approved list available in Engineering Office

5: Approved 3000+ Engineering, Business, Science, Math course, approved 2000+ Computer Science course (3cr) (See approved electives list available in SEET Office)

6: Senior standing (last full year at LETU) is a pre-requisite

7: EEGR 3523 Mechatronics may be substituted for MEGR 4423 Mechanical Vibrations.

8: Senior Design II must be the second half of the same project as Senior Design I (sequential semesters)

9: Any 2000+ level BIBL course, CCLT 3103, CCLT 3203, CCLT 4103, CMIN 3303, CMIN 3403, THEO 3003, THEO 3063, THEO 3103, THEO 3133, THEO 3203, THEO 4941-4993 Special Topics classes

10: Offered with sufficient demand