

**School of Engineering and Engineering Technology**  
**ENGINEERING, B.S.**  
**COMPUTER CONCENTRATION (CE)**  
**2019-20**  
**SUGGESTED COURSE SEQUENCE**

First Semester - Fall			
<b>16 Hours</b>			
___	BIBL	1033	3 Biblical Literature
___	CPGR	2102	2 Intro to Computer Engineering (Fall only)
___	ENGL	1013	3 English Composition I
___	ENGR	1311	1 Manufacturing Processes Lab
___	ENGR	1513	3 Intro to Engineering Practice I (Fall only)
___	LETU	1101	1 Cornerstones of Life & Learning
___	MATH	1903	3 Calculus I <sup>(1)</sup>

Second Semester - Spring			
<b>16 Hours</b>			
___	ENGL	1023	3 English Composition II
___	ENGR	1523	3 Intro to Engineering Practice II (Spring only)
___	MATH	2013	3 Calculus II <sup>(1)</sup>
___	PHYS	2011	1 University Physics I Lab (Spring only)
___	PHYS	2013	3 University Physics I (Spring only)
___	THEO	2043	3 Biblical Theology for the Christian Life

Third Semester - Fall			
<b>17 Hours</b>			
___	COSC	1303	3 Computer Science I
___	EEGR	2051	1 Circuits & Measurements Lab <sup>(1)</sup>
___	EEGR	2053	3 Electric Circuits <sup>(1)</sup>
___	MATH	2203	3 Differential Equations
___	PHYS	2021	1 University Physics II Lab (Fall only)
___	PHYS	2023	3 University Physics II (Fall only)
___		3	Civic Engagement Elective

Fourth Semester - Spring			
<b>16 Hours</b>			
___	COSC	2103	3 Computer Science II
___	EEGR	2163	3 Advanced Circuits <sup>(1)</sup> (Spring only)
___	EEGR	3213	3 Digital Electronics
___	ENGR	2400	0 Sophomore Design Seminar (Spring only)
___	ENGR	2704	4 Project Mgmt, Design & Entrepreneurship
___	MATH	2003	3 Discrete Mathematics

Fifth Semester - Fall			
<b>16 Hours</b>			
___	CPGR	4233	3 Intro to Microprocessors/computers (Fall only)
___	COMM	1113	3 Intro to Speech Communication
___	COSC	2203	3 Data Structures
___	EEGR	3314	4 Electronics and Lab (Fall only)
___	MATH	2303	3 Linear Algebra

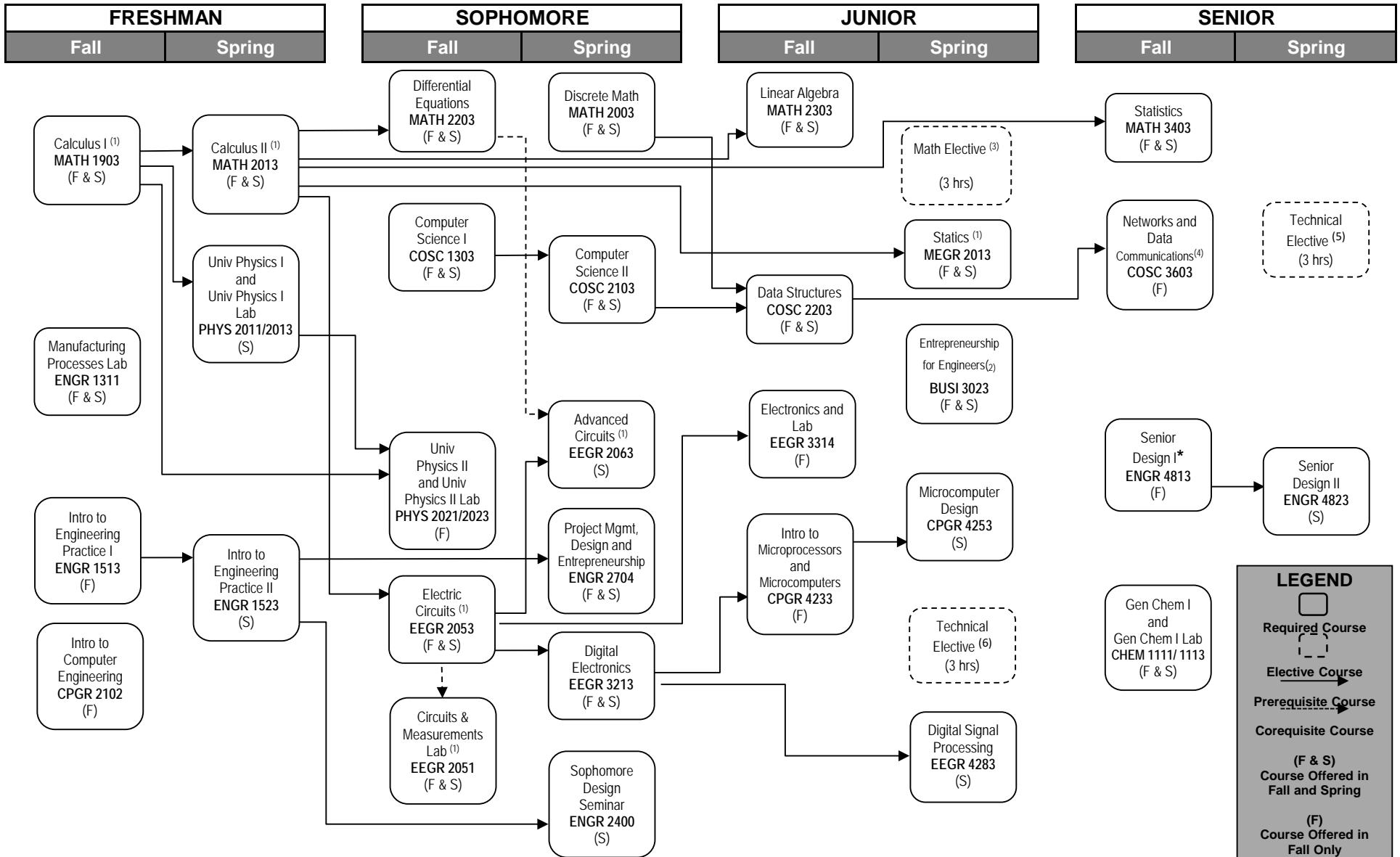
Sixth Semester - Spring			
<b>18 Hours</b>			
___	BUSI	3023	3 Entrepreneurship for Engineers <sup>(2)</sup>
___	CPGR	4253	3 Microcomputer Design (Spring only)
___	EEGR	4283	3 Digital Signal Processing (Spring only)
___	MEGR	2013	3 Statics <sup>(1)</sup>
___	MATH	3	3 Math Elective <sup>(3)</sup>
___		3	3 Technical Elective <sup>(6)</sup>

Seventh Semester - Fall			
<b>16 Hours</b>			
___	BIBL		3 Biblical Engagement Elective
___	CHEM	1111	1 General Chemistry I Lab
___	CHEM	1113	3 General Chemistry I
___	COSC	3603	3 Networks & Data Communications <sup>(4)</sup>
___	ENGR	4813	3 Senior Design I (Fall only)
___	MATH	3403	3 Statistics

Eighth Semester - Spring			
<b>15 Hours</b>			
___	ENGR	4823	3 Senior Design II (Spring only)
___	THEO		3 Theological Engagement Elective
___			3 Civic Engagement Elective
___			3 Ingenuity Elective
___			3 Technical Elective <sup>(5)</sup>

**TOTAL HOURS 130**

- 1: Minimum grade of 'C' required.
- 2: ENGR 6223 Advanced Engineering Mathematics recommended if considering engineering graduate school.
- 3: MATH 3453, 4233, 4253, 4403 or 4513
- 4: COSC 3303 Computer Architecture (Spring only) or COSC 3503 Operating Systems (Spring only) may be substituted for COSC 3603.
- 5: Any approved engineering course or computer science course
- 6: Any 3000+ level approved engineering course



1: Minimum grade of 'C' required.

2: ENGR 6223 Advanced Engineering Mathematics recommended if considering engineering graduate school.

3: MATH 3453, 4233, 4253, 4403 or 4513

4: COSC 3303 Computer Architecture (Spring only) or COSC 3503 Operating Systems (Spring only) may be substituted for COSC 3603.

5: Any approved engineering course or computer science course

6: Any 3000+ level approved engineering course

\*Senior standing, completion of junior courses in concentration, and consent of instructor required.