

School of Engineering and Engineering Technology
ENGINEERING TECHNOLOGY, B.S.
MATERIALS JOINING CONCENTRATION (MJT)
2018-19

SUGGESTED COURSE SEQUENCE

First Semester - Fall			
16 Hours			
___	CHEM 1111	1	General Chemistry I Lab
___	CHEM 1113	3	General Chemistry I
___	ENGL 1013	3	English Composition I
___	ENGR 1513	3	Intro to Engineering Practice I (Fall only)
___	LETU 1101	1	Cornerstones of Life & Learning
___	MATH 1252	2	Trigonometry ⁽¹⁾
___	MATH 1303	3	Precalculus ⁽¹⁾

Second Semester - Spring			
17 Hours			
___	BIBL 1033	3	Biblical Literature
___	ENGL 1023	3	English Composition II
___	ENGR 1311	1	Manufacturing Processes Lab
___	ENGR 1523	3	Intro to Engineering Practice II (Spring only)
___	MATH 1603	3	Technical Calculus I (Spring only) ⁽¹⁾
___	PHYS 1111	1	General Physics I Lab (Spring only)
___	PHYS 1113	3	General Physics I (Spring only)

Third Semester - Fall			
17 Hours			
___	ENGR 2313	3	Materials Engineering (Fall only)
___	ENGR 2704	4	Project Mgmt, Design & Entrepreneurship
___	MATH 1613	3	Technical Calculus II (Fall only)
___	METC 2013	3	Statics (Fall only) ⁽¹⁾
___	PHYS 1121	1	General Physics II Lab (Fall only)
___	PHYS 1123	3	General Physics II (Fall only)

Fourth Semester - Spring			
16 Hours			
___	EETC 1021	1	DC Electricity Lab (Spring only) ⁽¹⁾
___	EETC 1022	2	DC Electricity (Spring only) ⁽¹⁾
___	ENGR 2400	0	Sophomore Design Seminar (Spring only)
___	METC 2023	3	Dynamics (Spring only) ⁽¹⁾
___	MJET 2021	1	Materials Joining Fundamentals Lab (Spring only)
___	MJET 2023	3	Materials Joining Fundamentals (Spring only)
___	THEO 2043	3	Biblical Theology for the Christian Life
___		3	Civic Engagement Elective

Fifth Semester - Fall			
16 Hours			
___	BUSI 3003	3	Foundations of Business for Engineers
___	EETC 1041	1	AC Electricity Lab (Fall only) ⁽¹⁾
___	EETC 1042	2	AC Electricity (Fall only) ⁽¹⁾
___	METC 3321	1	Strength of Materials Lab (Fall only)
___	METC 3323	3	Strength of Materials (Fall only)
___	MJET 3502	2	Mtls Testing & Characterization Lab (Fall only)
___	MJTC 2634	4	Joining Methods & Processes (Fall only)

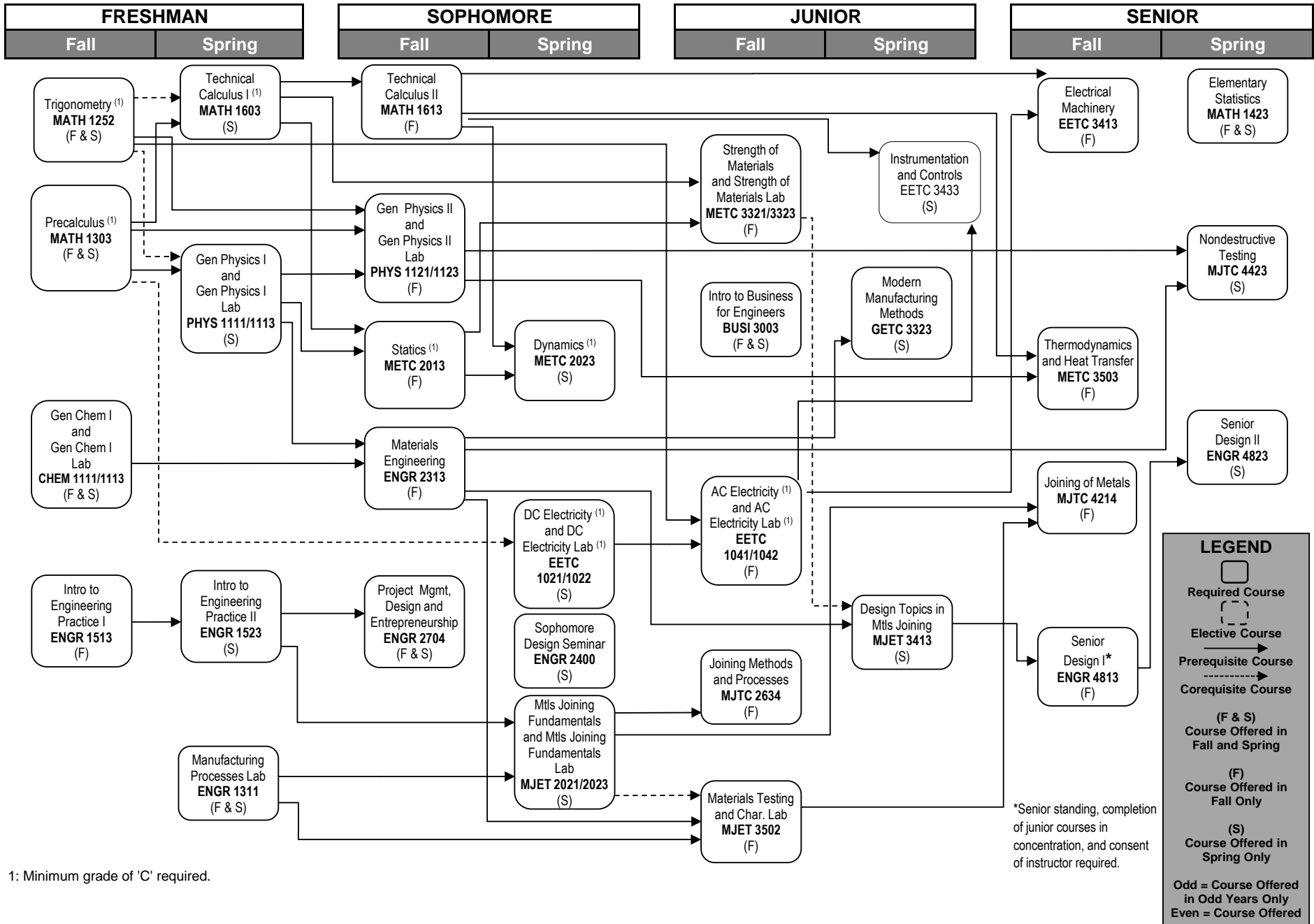
Sixth Semester - Spring			
15 Hours			
___	BIBL	3	Biblical Engagement Elective
___	COMM 1113	3	Intro to Speech Communication
___	GETC 3323	3	Modern Manufacturing Methods (Spring only)
___	MJET 3413	3	Design Topics in Mtls Joining (Spring only)
___	EETC 3433	3	Instrumentation and Controls (Spring only)

Seventh Semester - Fall			
16 Hours			
___	EETC 3413	3	Electrical Machinery (Fall only)
___	ENGR 4813	3	Senior Design I (Fall only)
___	METC 3503	3	Thermodynamics & Heat Transfer (Fall only)
___	MJTC 4214	4	Joining of Metals (Fall only)
___	THEO	3	Theological Engagement Elective

Eighth Semester - Spring			
15 Hours			
___	ENGR 4823	3	Senior Design II
___	MATH 1423	3	Elementary Statistics
___	MJTC 4423	3	Nondestructive Testing
___		3	Civic Engagement Elective
___		3	Ingenuity Elective

TOTAL HOURS 128

1: Minimum grade of 'C' required.



1: Minimum grade of 'C' required.