

**School of Engineering and Engineering Technology**  
**ENGINEERING, B.S.**  
**MATERIALS JOINING CONCENTRATION (MJE)**  
**2018-19**  
**SUGGESTED COURSE SEQUENCE**

First Semester - Fall			
<b>15</b> Hours			
___	CHEM	1111	1 General Chemistry I Lab
___	CHEM	1113	3 General Chemistry I
___	ENGL	1013	3 English Composition I
___	ENGR	1311	1 Manufacturing Processes Lab
___	ENGR	1513	3 Intro to Engineering Practice I (Fall only)
___	LETU	1101	1 Cornerstones of Life & Learning
___	MATH	1903	3 Calculus I <sup>(1)</sup>

Second Semester - Spring			
<b>16</b> Hours			
___	ENGL	1023	3 English Composition II
___	ENGR	1523	3 Intro to Engineering Practice II (Spring only)
___	MATH	2013	3 Calculus II <sup>(1)</sup>
___	PHYS	2011	1 University Physics I Lab (Spring only)
___	PHYS	2013	3 University Physics I (Spring only)
___	BIBL	1033	3 Biblical Literature

Third Semester - Fall			
<b>17</b> Hours			
___	ENGR	2313	3 Materials Engineering
___	ENGR	2704	4 Project Mgmt, Design & Entrepreneurship
___	MATH	2023	3 Calculus III
___	MEGR	2013	3 Statics <sup>(1)</sup>
___	PHYS	2021	1 University Physics II Lab (Fall only)
___	PHYS	2023	3 University Physics II (Fall only)

Fourth Semester - Spring			
<b>16</b> Hours			
___	THEO	2043	3 Biblical Theology for the Christian Life
___	ENGR	2400	0 Sophomore Design Seminar (Spring only)
___	MATH	2203	3 Differential Equations
___	MEGR	2023	3 Dynamics <sup>(1)</sup>
___	MEGR	3323	3 Mechanics of Materials (Spring only)
___	MJET	2021	1 Materials Joining Fundamentals Lab (Spring only)
___	MJET	2023	3 Materials Joining Fundamentals (Spring only)

Fifth Semester - Fall			
<b>16</b> Hours			
___	COMM	1113	3 Intro to Speech Communication
___	EEGR	2051	1 Circuits & Measurements Lab <sup>(1)</sup>
___	EEGR	2053	3 Electric Circuits <sup>(1)</sup>
___	MATH	3403	3 Statistics
___	MJEG	3204	4 Nondestructive Evaluation (Fall only)
___	MJET	3502	2 Mat'ls Testing & Characterization Lab (Fall only)

Sixth Semester - Spring			
<b>17</b> Hours			
___			3 Civic Engagement Elective
___	MEGR	4723	3 Heat Transfer (Spring only)
___	MJEG	3114	4 Materials Science of Joining (Spring only)
___	MJET	3413	3 Design Topics in Materials Joining (Spring only)
___	MATH	2301	1 Linear Algebra Lab
___	MATH	2303	3 Linear Algebra
___			

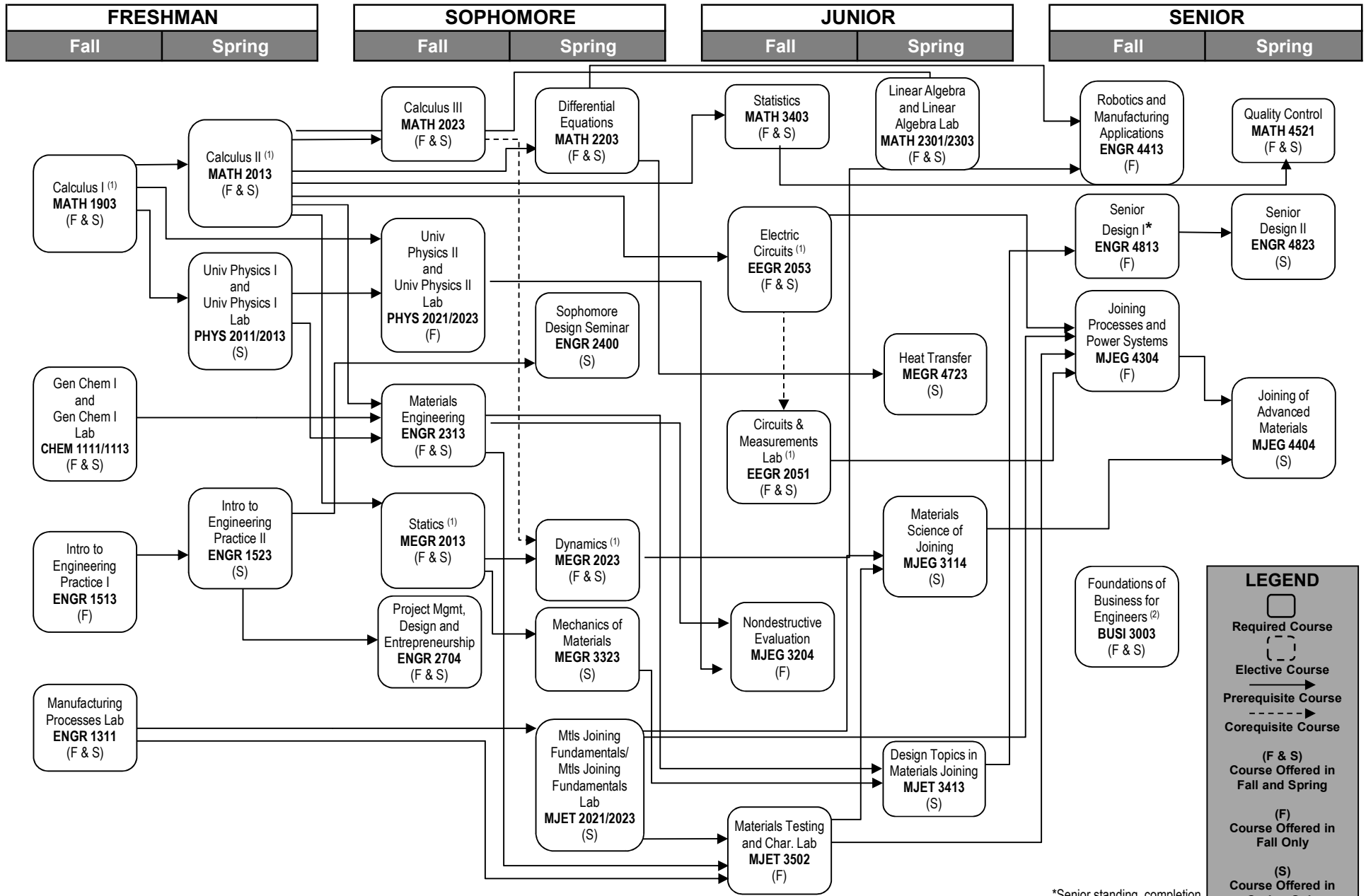
Seventh Semester - Fall			
<b>16</b> Hours			
___	BUSI	3003	3 Foundations of Business for Engineers <sup>(2)</sup>
___	ENGR	4813	3 Senior Design I (Fall only)
___	BIBL		3 Biblical Engagement Elective
___	MJEG	4304	4 Joining Processes & Power Systems (Fall only)
___	ENGR	4413	3 Robotics & Manufacturing Appl. (Fall only)

Eighth Semester - Spring			
<b>17</b> Hours			
___	ENGR	4823	3 Senior Design II (Spring only)
___	MATH	4521	1 Quality Control
___	MJEG	4404	4 Joining of Advanced Materials (Spring only)
___	THEO		3 Theological Engagement Elective
___			3 Civic Engagement Elective
___			3 Ingenuity Elective

**TOTAL HOURS 130**

1: Minimum grade for 'C' required.

2: Or ENGR 4653 Advanced Engineering Analysis recommended if considering engineering graduate school.



1: Minimum grade for 'C' required.

2: Or ENGR 4653 Advanced Engineering Analysis recommended if considering engineering graduate school.

\*Senior standing, completion of junior courses in concentration, and consent of instructor required.