

**School of Engineering and Engineering Technology**

**Civil Engineering, B.S.  
CIVIL ENGINEERING (BSCE)**

**2023-24**

**SUGGESTED COURSE SEQUENCE**

<b>First Semester - Fall</b>			
<b>17 Hours</b>			
___	BIBL	1033	3 Biblical Literature
___	CHEM	1111	1 General Chemistry I Lab
___	CHEM	1113	3 General Chemistry I
___	ENGL	1013	3 English Composition I
___	ENGR	1513	3 Intro to Engineering Practice I (Fall only)
___	LETU	1101	1 Cornerstones of Life & Learning
___	MATH	1903	3 Calculus I <sup>(1)</sup>

<b>Second Semester - Spring</b>			
<b>17 Hours</b>			
___	COSC	1303	3 Computer Science I
___	CEGR	1523	3 Introduction to CEE (Spring only)
___	ENGL	1023	3 English Composition II
___	ENGR	1311	1 Manufacturing Processes Lab
___	MATH	2013	3 Calculus II <sup>(1)</sup>
___	PHYS	2011	1 University Physics I Lab (Spring only)
___	PHYS	2013	3 University Physics I (Spring only)

<b>Third Semester - Fall</b>			
<b>16 Hours</b>			
___	CEGR	2013	3 Civil Engineering Materials (Fall only)
___	COMM	1113	3 Intro to Speech Communication
___	MATH	2023	3 Calculus III
___	MEGR	2013	3 Statics <sup>(1)</sup>
___		4	Science Elective <sup>(2)</sup>

<b>Fourth Semester - Spring</b>			
<b>17 Hours</b>			
___	CEGR	2502	2 CEE Project Management (Spring only)
___	ENGR	2400	0 Sophomore Design Seminar (Spring only)
___	MATH	2203	3 Differential Equations
___	MEGR	3323	3 Mechanics of Materials <sup>(1)</sup> (Spring only)
___	THEO	2043	3 Biblical Theology for the Christian Life
___		3	CEE Skills Elective (Spring only)
___		3	Civic Engagement Elective

<b>Fifth Semester - Fall</b>			
<b>17 Hours</b>			
___	CEGR	3213	3 Hydraulic Analysis (Fall only)
___	CEGR	3313	3 Structural Analysis (Fall only)
___	EVGR	3002	2 Sustainability and Stewardship (Fall only)
___	EVGR	3113	3 Environmental Engineering (Fall only)
___	MATH	3403	3 Statistics
___		3	Civic Engagement Elective

<b>Sixth Semester - Spring</b>			
<b>16 Hours</b>			
___	CEGR	3913	3 Geotechnical Engineering (Spring only)
___		3	Biblical Engagement Elective
___		3	CEE Skills Elective (Spring only)
___		3	CEE Engineering Science Elective
___		4	CEE Design Elective

<b>Seventh Semester - Fall</b>			
<b>14 Hours</b>			
___	CEGR	4001	1 Professional Licensing Prep (Fall only)
___	ENGR	4813	3 Senior Design I (Fall only)
___		4	CEE Design Elective
___		3	Ingenuity Elective
___		3	Math or Science Elective <sup>(3)</sup>

<b>Eighth Semester - Spring</b>			
<b>14 Hours</b>			
___	CEGR	4501	1 CEE Professional Practice (Spring only)
___	ENGR	4823	3 Senior Design II (Spring only)
___		3	CEE Engineering Science Elective
___		4	CEE Design Elective
___		3	Theological Engagement Elective

**TOTAL HOURS 128**

1: Minimum grade of 'C' required.

2: See approved electives sheet for list of acceptable 4-hour basic science courses.

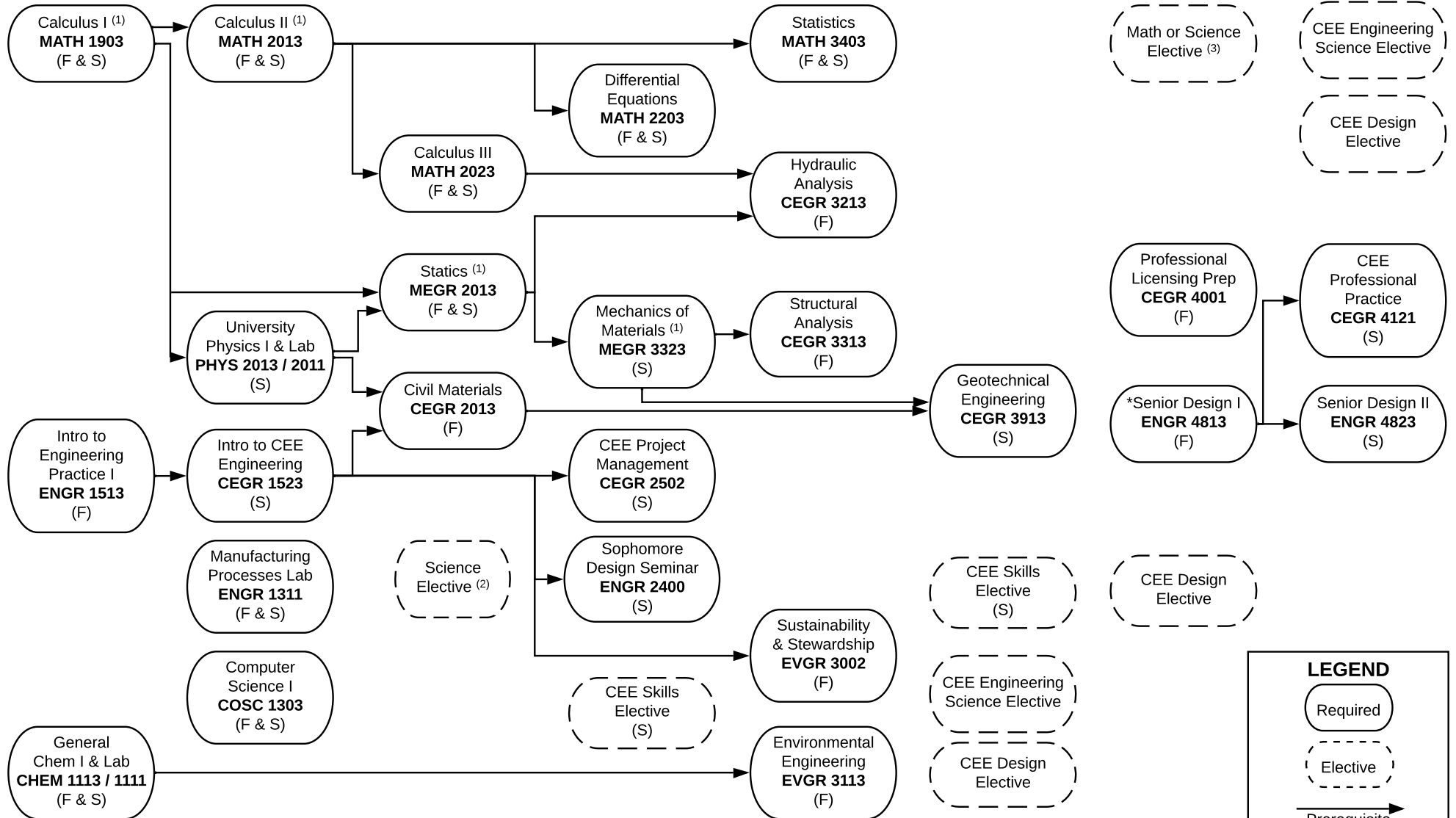
3: See approved electives sheet for list of acceptable 3-hour basic science or college-level mathematics courses.

**CEE Design Elective Requirements for Optional Civil Focus Areas**

<b>STRUCTURAL ENGINEERING FOCUS</b>			
CEGR	4324	4	Reinforced Concrete Design
CEGR	4834	4	Structural Steel Design
CEGR	4944	4	Advanced Loading and Wood Design

<b>WATER RESOURCES ENGINEERING FOCUS</b>			
CEGR	4224	4	Hydraulic Design
EVGR	4634	4	Water and Wastewater Design
CEGR	4744	4	Surface Water Hydrology

FRESHMAN		SOPHOMORE		JUNIOR		SENIOR	
Fall	Spring	Fall	Spring	Fall	Spring	Fall	Spring



\* Senior standing, completion of junior courses in concentration, and consent of instructor required.

**LEGEND**

- Required (solid rounded rectangle)
- Elective (dashed rounded rectangle)
- Prerequisite (solid arrow)
- Pre OR Corequisite (dashed arrow)
- Corequisite (dotted arrow)
- (F) = Fall Only
- (S) = Spring Only